

# Obihiro Pioneer

Tourism and Goodwill Exchange Section Newsletter

## CONTENTS



How to Separate  
Garbage #3  
Page 1, 2, 3



Movies  
Page 3



Events  
Page 4

## How to Separate Garbage #3

## ごみ分別のし方#3

This month, we will continue with Part 3 of our series on garbage (trash) separation by finishing up the section on recycling. There are 10 categories of recycling, and we've only covered 4! Next month, we will finish with hazmat and oversized trash.

### Garbage Separation Poster

Everything this newsletter will cover about trash separation can be found on the poster found at this QR code. However, the explanations are a bit lacking. I will fill in the gaps and give some advice to make this poster more understandable. You can get this poster for free at the locations listed at the top of the poster.

### Part 2: Recycling Trash

#### Note: Recycling Marks

As covered last week, recycled items tend to have the following marks on them:



If this mark is on an item, it can be recycled as long as it is not torn apart and is not dirty. An item can be recycled even if it does not have one of these marks, but still fits the category.

### E) Glass Bottles

While we covered plastic bottles, PET bottles and metal bottles, this category refers to glass bottles/jars. Recyclable items include the following:



- “One way bottles”, aka glass bottles not intended for multiple use (syrup bottles, jam jars, energy drink glass bottles, etc.)
- “Returnable bottles”, aka glass bottles that can be refilled and reused (beer bottles, sake bottles)

While the returnable bottle description makes sense, one way bottles are a bit confusing and not defined very well. The point is, if it is a glass bottle, it can generally be recycled **unless it is a white makeup glass bottle!** They cannot be recycled, so they go in blue bags. Also, **general glass items go in blue bags** as well.

ADVICE:

- Make sure that the bottles are de-labeled and cleaned before disposal
- For plastics I usually use a giant bag, but since glass can break, I usually put bottles in a small bag and take out as soon as possible.

*Continued on Page 2*

## How to Separate Garbage #3

## ごみ分別のし方#3

*Continued from Page 1*

- If a glass bottle is broken, refer to part 1 on how to throw away glass in blue bags

### F) Paper Containers and Packaging

Now that we covered plastics, metals and glass, we finish up recycling with paper! There are multiple categories that cover “paper” products, and it can be confusing, so please make sure you are recycling into the right category since categories are bagged/bundled separately. Please read carefully, you can do it!

This category covers general papers that do not fit into the other paper sections. The easiest way to tell if it fits is to check to see if the above mark is on the item, but just because it doesn't have the mark doesn't mean it can't be a paper product. Some of these items include:

- Paper bags and paper wrapping
- Paper boxes (napkin boxes, cookie boxes, etc.)
- Paper packaging from things you buy

While this category might seem small, I find it to be one of the biggest sources of my recycling. Most things you buy for the kitchen or home come with some sort of paper-made packaging and all of that can be recycled. Make sure that the paper items are **not dirty** and **not shredded up** when recycling.

ADVICE:

- If you have something you feel is recyclable but just doesn't fit in any category, first check to see if the mark is on the item. If it isn't (ex. An paper envelope), it's better to be safe and put it in a red bag.
- Shredded paper, as in paper you shred up by



### G) Paper Cartons

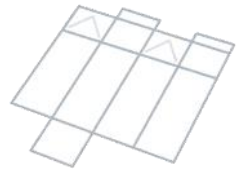
This category refers to any kind of carton made of paper that have this mark ⇒



Some of these items include:

- Milk and juice cartons

That's about it. What you have to do, though, is first **rinse out and dry** the cartons. Then, use scissors to cut the cartons carefully and **flatten them** like this ⇒



After doing so, stack them, bundle them with some burnable string and dispose.

ADVICE:

- Supermarkets usually collect these flattened cartons, so you can save yourself the string and take them to the store alongside PET bottles

### H) Magazines/Fliers/Books

These item do not have a mark!

However, if they fit/are similar to the following items, they can be bundled as this category:



- Books (textbooks, novels, notebooks, etc.)
- Magazines (monthly magazines, etc.)
- Fliers (advertisements, leaflets, this newsletter)
- Loose leaf paper (any color)
- Paper rolls (toilet paper rolls, kitchen paper rolls, wrap rolls, etc.)

The above items can be bundled up with burnable string and recycled. The paper rolls should be inserted between paper/books so they don't fall out.

## How to Separate Garbage #3

## ごみ分別のし方#3

### ADVICE:

- You should take books to recycle shops! You might only get like 5 yen, but you might help find the book a home!
- Before throwing away any papers, first make sure they don't have any personal information on them. Things like unneeded bills and letters should be shredded and thrown in red bags.
- Before disposing of fliers in the mail, first go through them and make sure you don't have a bill or some important letter stuck inside!

### I) Newspapers

This category refers exactly to newspapers! Things like leaflets inside the newspaper should be recycled separately, but the newspapers themselves should be bundled up and thrown away together.



### ADVICE:

- You likely get Obihiro's monthly newspaper in the mail. You should bundle and recycle them!

### J) Cardboard

The final category! This category basically refers to any cardboard used to store items. It usually doesn't have this mark. This section includes:



- Shipping boxes
- Furniture/large item boxes
- Large cardboard food containers

As usual, fold them together, bundle them up, and recycle on recycling day!

### ADVICE

- I suggest keeping a few boxes folded in your house in case of emergency or for storage.

Next week, we will cover hazardous waste!

## Movies @ Cinema Taiyo in Obihiro

Nishi 3 Minami 11, Obihiro Tel: (0155) 20-1525

Not all movies are listed. Times and movies are subject to change.  
To confirm, call or check online at: [www.taiyogroup.jp/movie/obihiro](http://www.taiyogroup.jp/movie/obihiro)

Title	Genre	Lang	Dates
Lyle, Lyle, Crocodile <i>Singu Fō Mī, Rairu</i>	Animation	EN	All Month
Touken Ranbu: The Movie 2 <i>Eiga Tōken Ranbu Reimei</i>	Anime	JP	All Month
Detective Conan: Black Iron Submarine <i>Meitantei Konan Kurogane no Gyoei</i>	Anime	JP	From 14 <sup>th</sup>
The Super Mario Bros. Movie <i>Za Sūpā Mario Burazāzu Mūbī</i>	Animation /Comedy	JP	From 28 <sup>th</sup>
Knights of the Zodiac <i>Seinto Seiya Za Biginingu</i>	Action	EN	From 28 <sup>th</sup>

KEY: JP = Japanese voice EN = English voice with Japanese subtitles






The Super Mario Bros. Movie



Knights of the Zodiac

## Events in Tokachi

**Please be aware that these and other events may be affected by COVID-19. To find out if these events are still running, please contact the respective organizers or check out their webpages online.**

When	What	Where/Contact
4/11, 4/25 (Tue)	<b>International Exchange Mini Volleyball</b> 国際交流ミニバレー Meet foreign and Japanese people while relaxing and getting exercise with a game of mini volleyball!  Fee: 200 yen/person Notes: Please bring a towel and indoor shoes	Kawanishi Nogiyosha Kenshu Center @ Obihiro Rohayhu Hokkaido (Pedro) 080-2874-5532
4/14~4/16 (Fri~Sun) Fri: 19:00 Sat: 14:00 and 19:00 Sun: 14:00	<b>Marimba and Vibraphone Chapel Concert</b> マリンバとヴィブラフォンチャペルコンサート Listen to classic, traditional, and popular music played on the marimba and vibraphone. There will be a guest appearance by a soprano singer who will sing along to the music. Take this chance to listen to rare instruments playing beautiful music!  Fee: JHS students and below/free, students/¥1000, general/¥2000. Note: An extra ¥500 will be charged if you buy tickets the day of Registration: Apply at the QR code to the right (Japanese)	Tokachi Hills Chapel @ Makubetsu Obihiro Mallet gANG 080-5593-4062 obihiro.malletgang@gmail.com  
4/15 (Sat) 16:00-18:00	<b>International Potluck Party: Iran</b> ポットラック・パーティー「イラン」 Bring a dish and drink to share with everyone and join us at our International Potluck Party! Enjoy an evening of delicious food and fun conversation while making new friends from all over the world! This time, Atefeh from Iran will introduce an Iranian stew called "khoresh gheymeh".  Fee: Free Participants: Max 15 people Registration: Apply at the QR code to the right	Tokachi International Relations Center @ Obihiro 帯広市観光交流課 0155-34-0122 tirc@city.obihoro.hokkaido.jp  
4/23 (Sun) 8:00-12:00	<b>Honbetsu Cross Country Event</b> 本別クロスカントリー大会 Enjoy the new spring weather with a cross country run! There will be 3 courses, one each for young kids, older kids, and adults.  Fee: Elementary school and below/¥500, JHS/HS students/¥1000, Adults/¥2500 Participants: Max 300 people Registration: Apply at the QR code to the right until April 10th, or apply by phone or email Notes: In the event of rain, the event will take place the following day	Honbetsu Park @ Honbetsu 幕別町スポーツイベント 実行委員会 0156-22-2331 taiiku@town.honbetsu.hokkaido.jp  

**Obihiro Pioneer** is a newsletter published monthly by the Obihiro City Tourism and Goodwill Exchange Section for residents of the Tokachi District and related parties. The contents of this newsletter do not necessarily represent the official views or opinions of the Tourism and Goodwill Exchange Section or the City of Obihiro.

**Obihiro Pioneer** can be found at the following locations: Obihiro City Hall, Tokachi International Relations Center, JICA Obihiro International Center, and Cinema Taiyo. The digital version can be found on Obihiro City's homepage at [www.city.obihoro.hokkaido.jp](http://www.city.obihoro.hokkaido.jp) (search for "Obihiro Pioneer") or by scanning the QR code on the right.

Questions? Contact the Editing Team at:

Tel: (0155) 65-4133

Email: [international@city.obihoro.hokkaido.jp](mailto:international@city.obihoro.hokkaido.jp)

For Haruna, Ren, and Maya

